

Sacerdotes Domini
ofertorio de Corpus Christi.
para 8 voces iguales y órgano

Juan B. Hajj

Caracas 439.

Factoris de Capone

Sanctus

Andante tranquillo

- à William Mason -

3, rue de la Harpe 1937

Sa - ctae do - ctus Do - mi - ni

Sa - ctae do - ctus Do - mi - ni

con - sumit pa - nes. of - ferunt De - o, of - ferunt

con - sumit pa - nes. of - ferunt of - ferunt

rit. a tempo

De - o et e - de o

De - o et e - de o

San - - - - - ctus ex - - - - - sur - - - - - git, et ex - - - - - sur - - - - - git De - - - - - o su - - - - -

ctus - - - - - de - - - - - san - - - - - ctus ex - - - - - sur - - - - - git De - - - - - o su - - - - -



rit. et non polluitur nomine e - - - - - jus. *Tempo mosso.* Al - - - - - le - - - - - lu - - - - - ja Al - - - - -

et non polluitur nomine e - - - - - jus. Al - - - - - le - - - - - lu - - - - - ja



rit. allarg. le - - - - - lu - - - - - ja, Al - - - - - le - - - - - lu - - - - - ja, Al - - - - - le - - - - - lu - - - - - ja.

lu - - - - - ja, Al - - - - - le - - - - - lu - - - - - ja, Al - - - - - le - - - - - lu - - - - - ja.



Handwritten musical notation on a five-line staff. The notation includes various notes, rests, and bar lines. There are some faint markings above the staff that appear to be lyrics or performance instructions.

Handwritten musical notation on a five-line staff. This section contains more complex notation, including what looks like a key signature change and various rhythmic markings. There are also some illegible handwritten notes written across the staff.

Handwritten musical notation on a five-line staff. This section appears to be a continuation of the piece, with similar notation to the previous sections. There are some markings that could be figured bass or specific performance instructions.

Handwritten musical notation on three staves. The notation is dense and includes various notes, rests, and symbols, possibly representing a complex rhythmic or melodic structure. The ink is dark and the paper shows signs of age.

Handwritten musical notation on three staves. The notation includes notes, rests, and some text written below the staves. The text appears to be lyrics or descriptive notes in a non-Latin script, possibly related to the musical piece. The ink is dark and the paper shows signs of age.

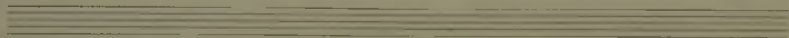
Handwritten musical notation on three staves. The notation includes notes, rests, and some text written below the staves. The text appears to be lyrics or descriptive notes in a non-Latin script, possibly related to the musical piece. The ink is dark and the paper shows signs of age.

Viola CAMO125 Ofertorio de Corpus Christi.

J. B. P. 1873

Lento, tranquillo.

Piu mosso. *allora: rit*



Handwritten text, possibly a title or reference number, located in the top left corner.

41 11 60 N



Handwritten musical notation on two staves. The notation includes notes, stems, and beams, with some annotations above the notes. The first staff appears to be a vocal line, and the second staff is likely a piano accompaniment. The notation is somewhat faint and appears to be a draft or working manuscript.

Four sets of empty musical staves, each consisting of five horizontal lines, arranged vertically below the first two staves. These staves are completely blank and appear to be provided for further notation or as a template for a score.

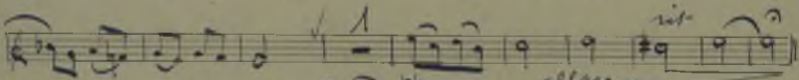
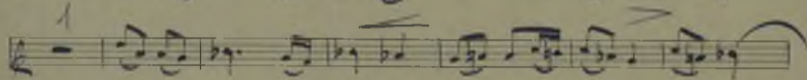
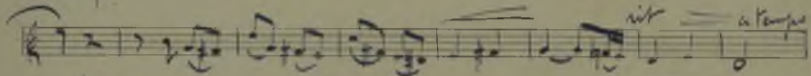
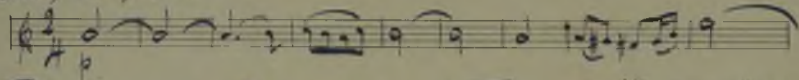
Violin 1^o

Offertorium de Corpus Christi.

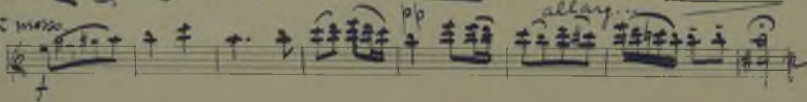
J. B. Blazé

CC4 0125

lento, tranquillo.



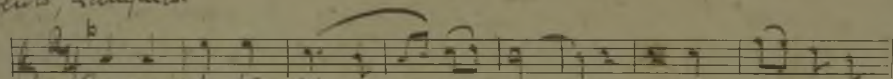
Piu mosso



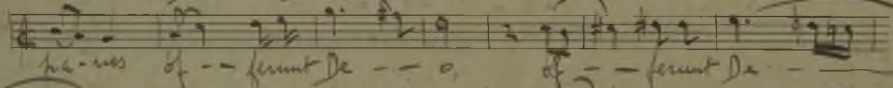
1^{re} Voy. 0040125 - Offertorio de Corpus Christi.

J. S. P. 1939

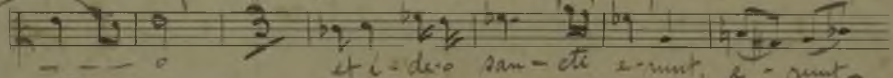
Lento, tranquilo.



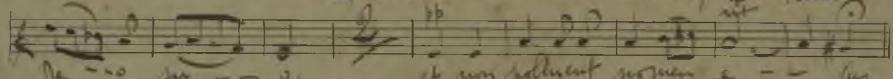
Sacer- do- tes Do - - - mi ni in - cen- sum et



ha- nos of - - ferunt De - - o, of - - ferunt De - -

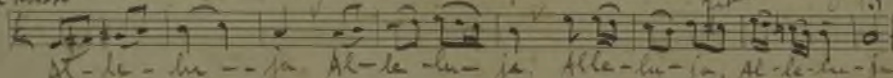


et i- de-o san- cti a- runt, a- runt,

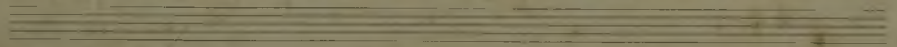
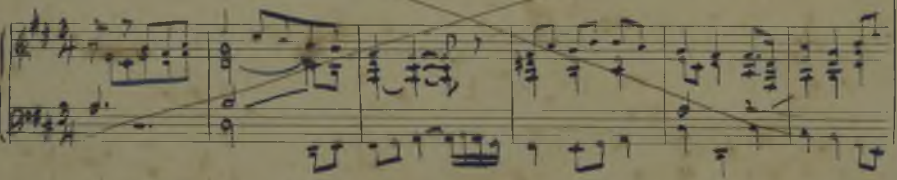
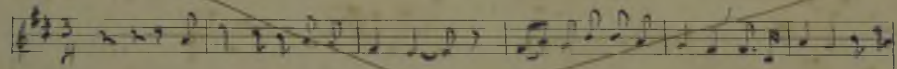


et non polluent, non veni- a - - - jus.

Piu mosso



Al- le- lu - - ja. Al- le- lu- ja. Al- le- lu- ja. Al- le- lu- ja.



1^a Voz

Offertoria de Corpus Christi

J. S. Paganini
1937

CCM0125

Lento, tranquillo.

Sa-cer - do - tes Do - - - mi - ni in - cen - sum et
 pa - nes of - - ferunt De - - o, of - - ferunt De - -
 - - - o: et i - deo san - cti e - runt, e - runt
 De - - o su - - o, et non solle - runt no - men e - - us
 f Al - le - lu - ja, Al - le - lu - ja, Alle - lu - ja Al - le - lu - ja.

Primus

2^a Voiz. CCMO 125 Offertorio de Corpus Christi.

J. St. Roger
1937.

Lento, tranquillo.

Sacer-dotes Do--mi-ni in-
consumet pa--nes of-ferunt of-ferunt De--o:
et i-tero san-cti e-runt De--o in-pi-angeli.
et non solument no-man e-rit i-ter-ius.
Alle-lu-ja. Alle-lu-ja Alle-lu-ja.

2^a Voiz COMO 125 Offertorium de Corpus Christi

J. J. Paganini
1839

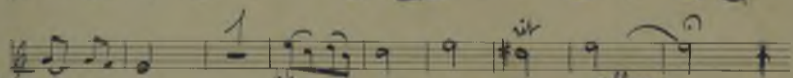
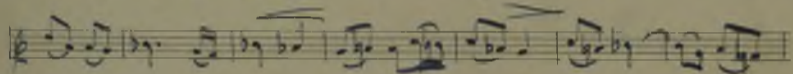
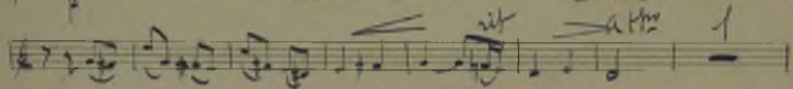
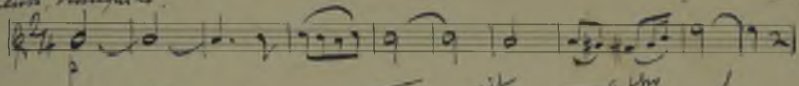
Lento, tranquillo.

Sa-cer-dotus Do-mi-ni in-ter-his et
 pa-tris of-fen-dit of-fen-dit De-o.
 et e-de-o san-cte e-runt De-o.
 et non pol-lu-ent non e-ru-nt De-o. Al-le-
 lu-ja, Al-le-lu-ja. Al-le-lu-ja.

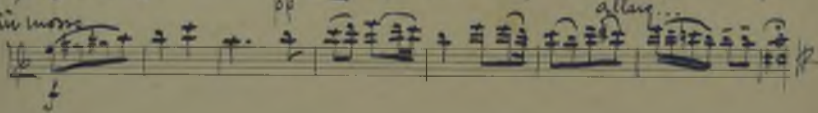
Violin 1^o CCH 0125 - Offertorio de Corpus Christi

J. B. P. S.

Lento, tranquillo.



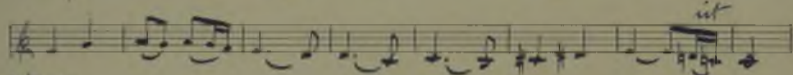
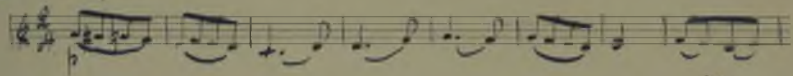
Rit. mosso



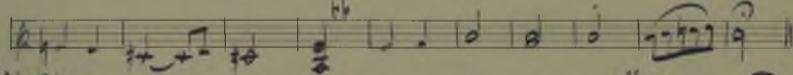
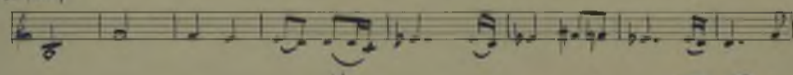
Violin 2^o

Ofertorio de Corpus Christi. J. S. Haydn

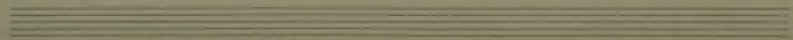
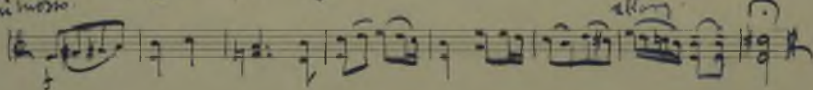
Rento, tranquilo. ^{CGM0125}



a tempo



piu mosso



Cello.

Opertorio de Corpus Christi.

M. Haydn

Lento, tranquilo.

COMO 125

Handwritten musical notation for the first staff of the cello part, featuring a treble clef, a 2/4 time signature, and a series of eighth and sixteenth notes with slurs.

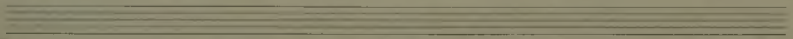
Handwritten musical notation for the second staff of the cello part, continuing the melodic line with various note values and slurs.

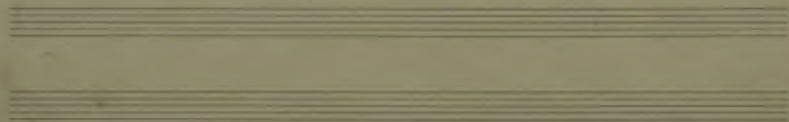
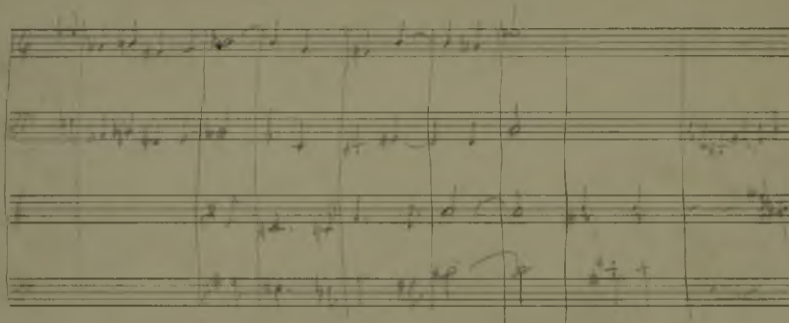
Handwritten musical notation for the third staff of the cello part, showing a more complex rhythmic pattern with slurs and accents.

Handwritten musical notation for the fourth staff of the cello part, including a "rit." marking and various note values.

pp.
Piu mosso.

Handwritten musical notation for the fifth staff of the cello part, starting with a forte "f" dynamic and an "allarg." marking.





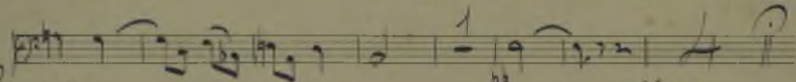
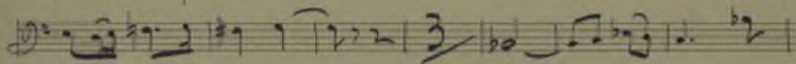
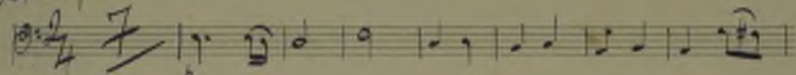
Contrabajo

Ofertorio de Corpus Christi

J. S. Paganini

Lento, tranquilo.

CCM0125



Piu mosso

